

PUBLIC NOTICE
LEUCADIA WASTEWATER DISTRICT

NOTICE IS HEREBY GIVEN that on October 11, 2023, the Board of Directors of the Leucadia Wastewater District held a public hearing to consider adoption of Ordinance 147 which extends the term of the Reimbursement Agreement with MARQUEE ENTERPRISES, LLC ("DEVELOPER") and provides for collection of a reimbursement fee from properties benefited by sewer facilities constructed by Developer. Following the public hearing, Directors Elaine Sullivan, Donald Omsted, Chris Roesink, and Rolando Saldana voted to adopt Ordinance No. 147. The properties and reimbursement fee schedule are set forth below and complete copies of the Ordinance and Reimbursement Agreement are available for review at the District office.

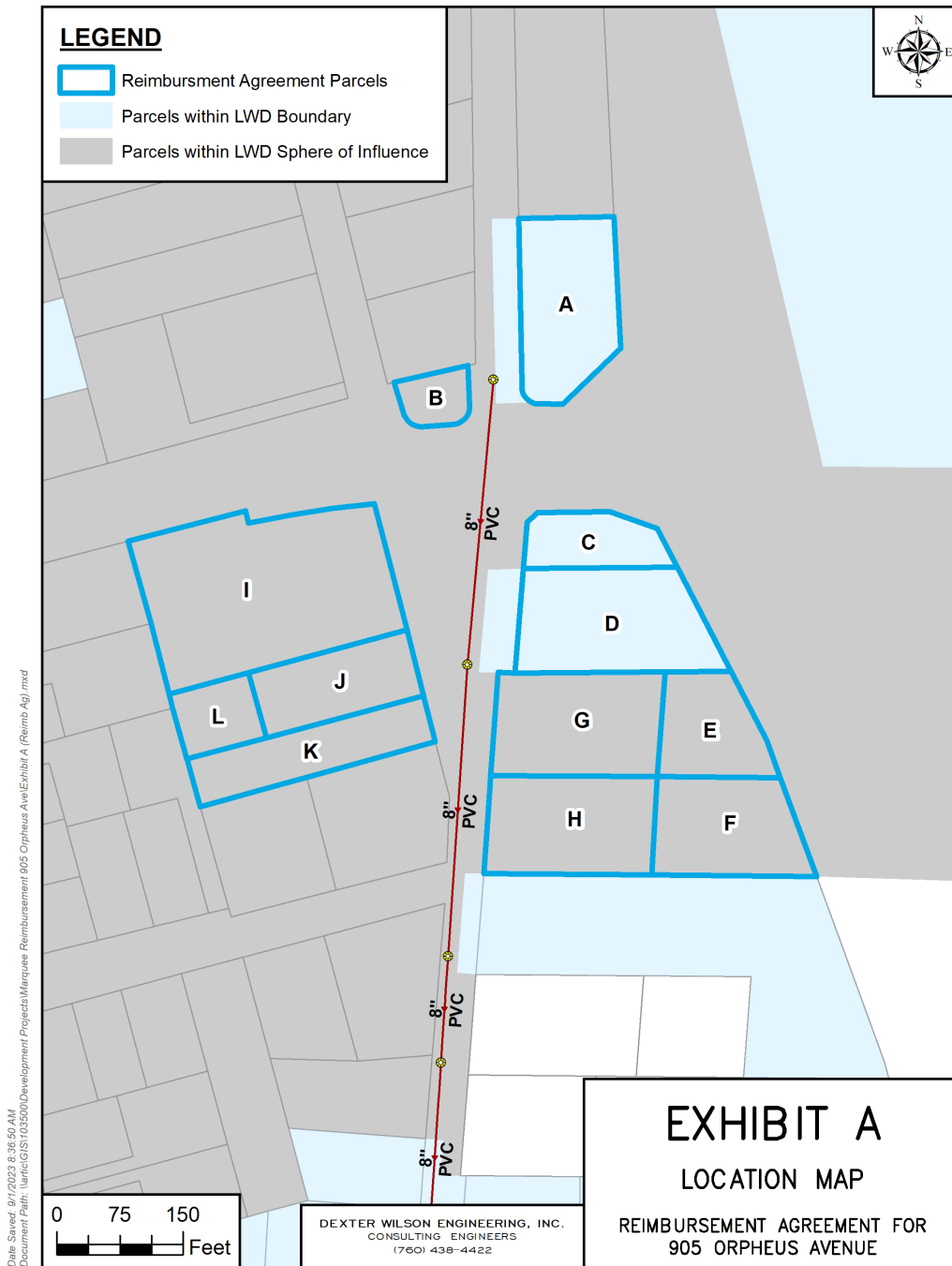


Exhibit B - Revised on 8/19/21
Reimbursement Agreement for 905 Orpheus Avenue
Updated Reimbursement Cost Schedule

905 Orpheus Avenue Sewer Extension Reimbursement Area (1)							
Exhibit A Parcel	Assessor Parcel No	Encinitas Zoning	Approx. Acres	Est. EDU's	Share of \$218,981.25 Cost	Amount to Reimburse Parcel A	Notes
A	254-270-18	VSC	0.59	5	\$57,626.64	\$57,626.64	Original 2012 share of cost - does not change
A1	254-270-18	VSC	0.59	1			Update Parcel A from 5.0 total EDU's to 6.0 total EDU's
B	256-243-14	R3	0.33	1	\$9,491.45	\$9,491.45	Est. EDU's remain unchanged - update cost share
C	256-121-34	VSC	0.14	6	\$56,948.68	\$56,948.68	Update Parcel C + D from 3.0 total EDU's to 6.0 total EDU's
D	256-121-29	VSC	0.66				
E	256-121-04	R3	0.31	1	\$9,491.45	\$9,491.45	Est. EDU's remain unchanged - update cost share
F	256-121-05	R3	0.49	1	\$9,491.45	\$9,491.45	Est. EDU's remain unchanged - update cost share
G	256-121-03	R3	0.54	1	\$9,491.45	\$9,491.45	Est. EDU's remain unchanged - update cost share
H	256-121-06	R3	0.56	1	\$9,491.45	\$9,491.45	Est. EDU's remain unchanged - update cost share
I	256-242-52	R3	1.25	3	\$28,474.34	\$28,474.34	Est. EDU's remain unchanged - update cost share
J	256-242-32	R3	0.33	1	\$9,491.45	\$9,491.45	Est. EDU's remain unchanged - update cost share
K	256-242-57	R3	0.41	1	\$9,491.45	\$9,491.45	Est. EDU's remain unchanged - update cost share
L	256-242-58	R3	0.17	1	\$9,491.45	\$9,491.45	Est. EDU's remain unchanged - update cost share
Total				23	\$218,981.25	\$104,405.93	Change EDU total from 22.0 to 23.0 and keep the original cost by Parcel A the same

(1) The reimbursement fee is calculated by dividing the Reimbursable Construction Costs by the assumed number of EDUs per parcel that could connect to the new facilities. Current calculations assume a total of 11 eligible EDUs. Once a reimbursement fee has been paid, it is final and not subject to adjustment. However, if during the term of this Agreement, the number of eligible EDUs changes due to a parcel split or other circumstance, then the reimbursement fee may be adjusted for new connections by dividing the balance of unpaid Reimbursable Construction Costs by the revised estimate of eligible EDUs that still could connect to the sewer system. Such adjustments shall only be made for new connections to the sewer system. No adjustment to past reimbursement will be made.